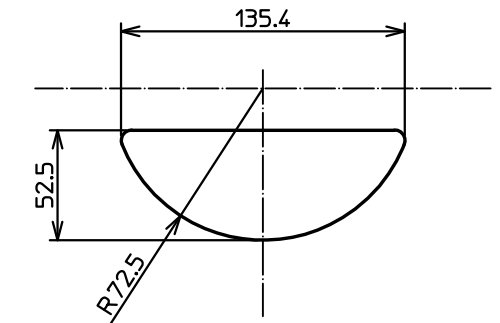
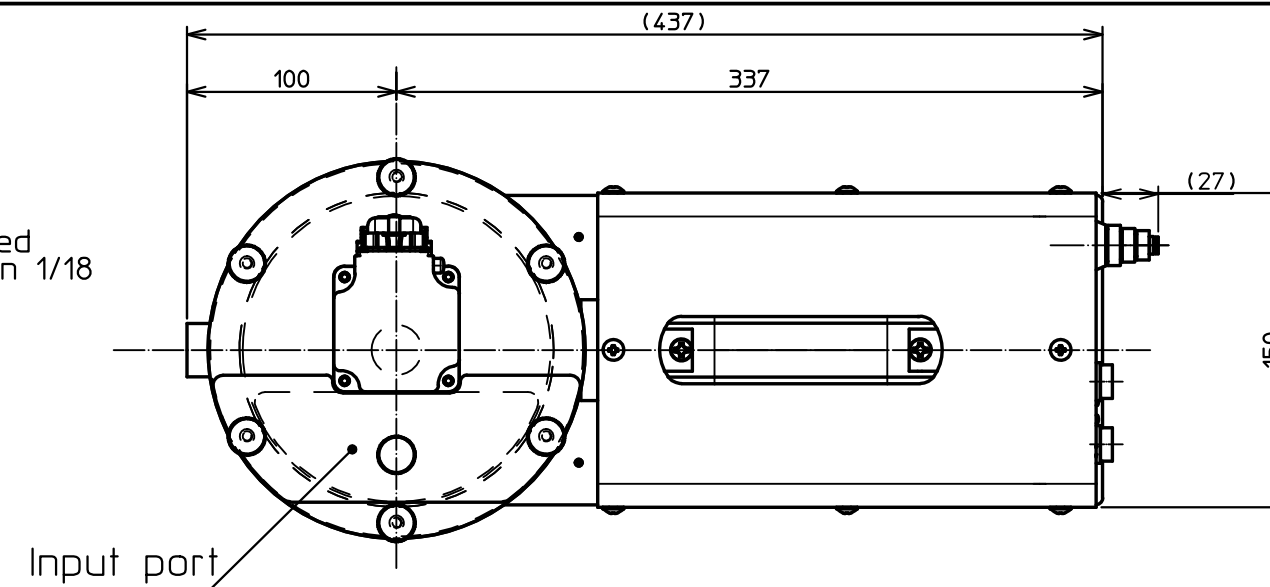


Standard specification

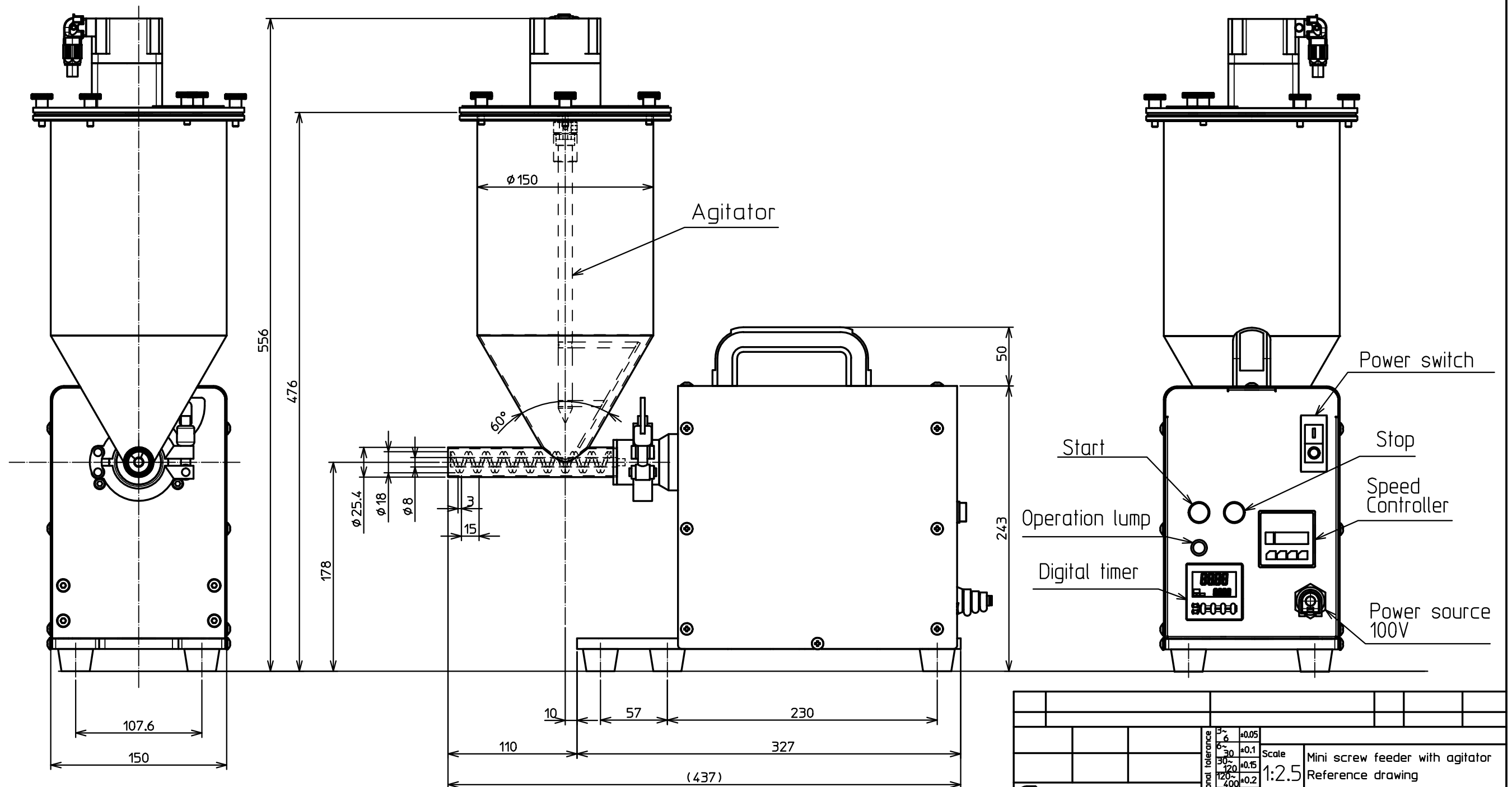
- Input voltage:Single phase,AC100V
- Circuit breaker 10A
- Digital timer
- Screw feeder: $\phi 25.4$ /SUS304/Polished
- Screw: $\phi 18$ - $\phi 8$ -t3-P15 Core/SUS304/Not polished
- Geared motor: Single phase/100V/25W/Reduction 1/18
- Hopper: 3L/SUS304/Polished inner face
- Total weight: Approx.18kg
- Material of base frame: Iron

Agitator specification

- Single phase 100V/30W
- Reduction gear:1/100
- Permissible torque Maximum 6N·m



Dimension of input port



Dimensional tolerance		3-6	+0.05	Scale	Mini screw feeder with agitator Reference drawing
		6-30	+0.1		
		30-120	+0.15	1:2.5	Drawing number SFM2U-3200BX-1
		120-400	+0.2		
		400-1000	+0.3	Third angle projection	
		1000-2000	+0.5		

Seiwa Giken Co.,Ltd